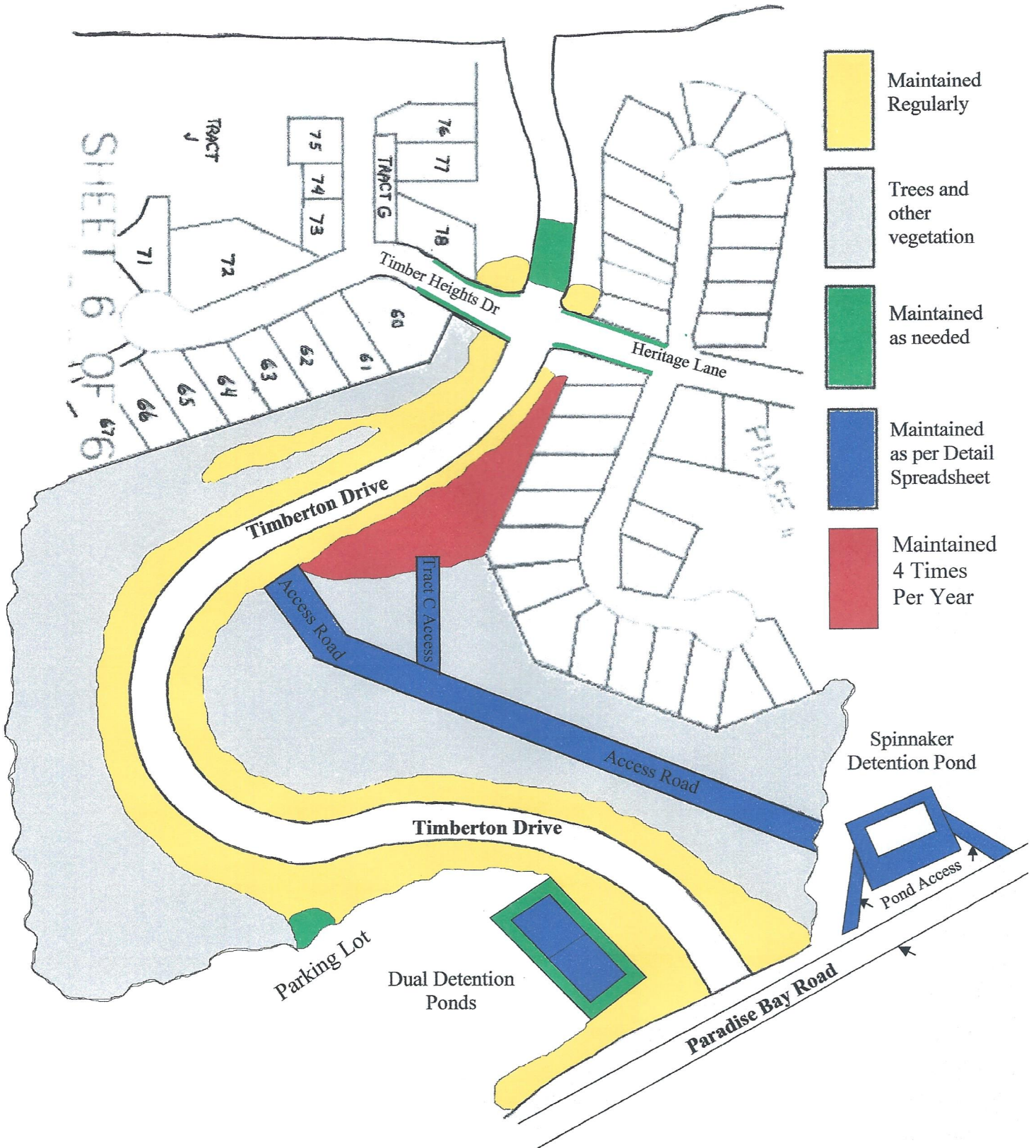


# Landscaping Service Contract

## Timberton Drive



SHEET 6 OF 6

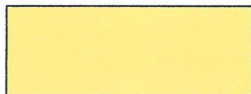
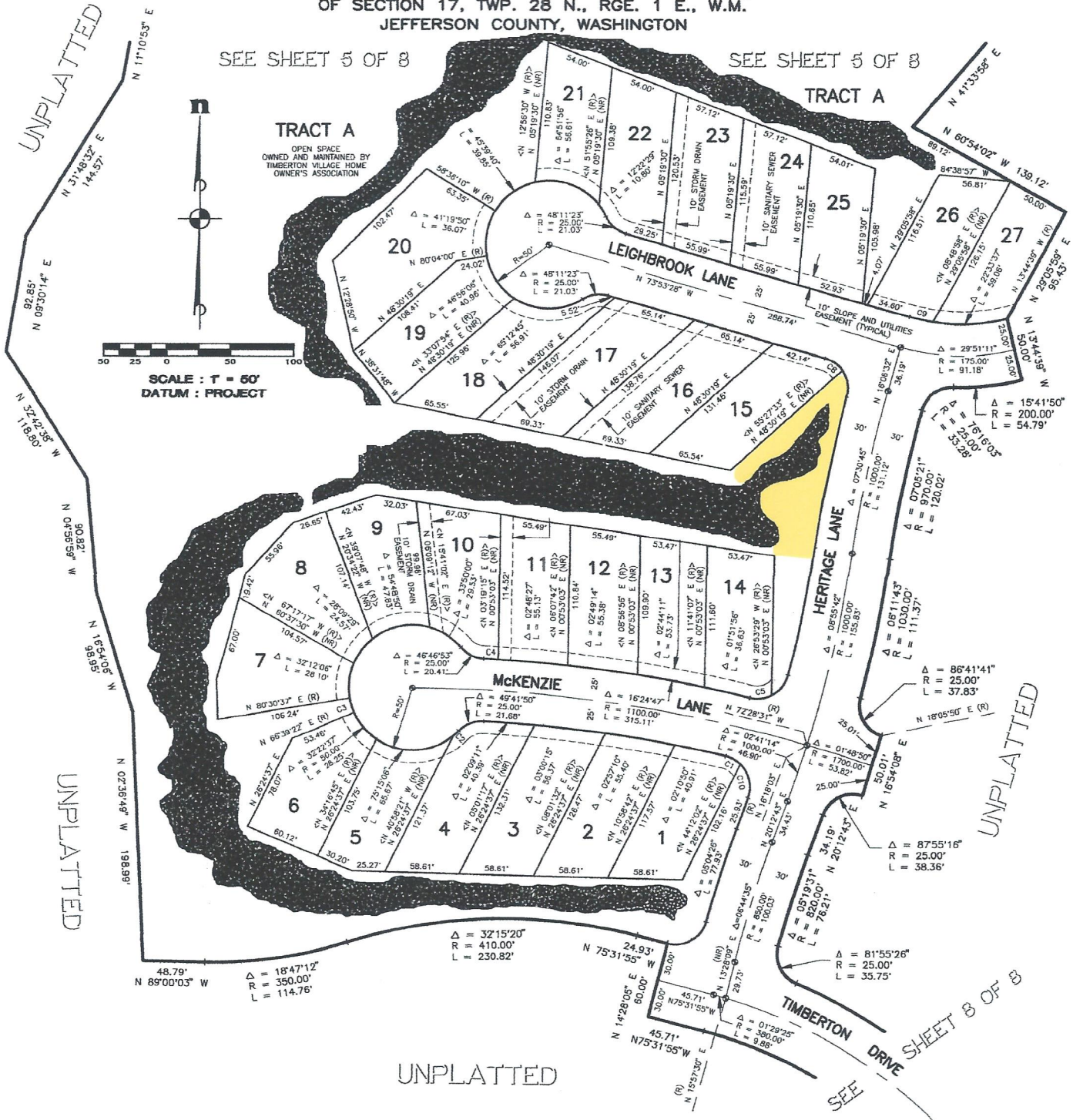
PHASE II

# TIMBERTON VILLAGE PHASE I

A PORTION OF THE SW 1/4 AND OF THE SE 1/4  
OF SECTION 17, TWP. 28 N., RGE. 1 E., W.M.  
JEFFERSON COUNTY, WASHINGTON

SEE SHEET 5 OF 8

SEE SHEET 5 OF 8



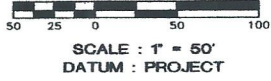
Maintained Regularly



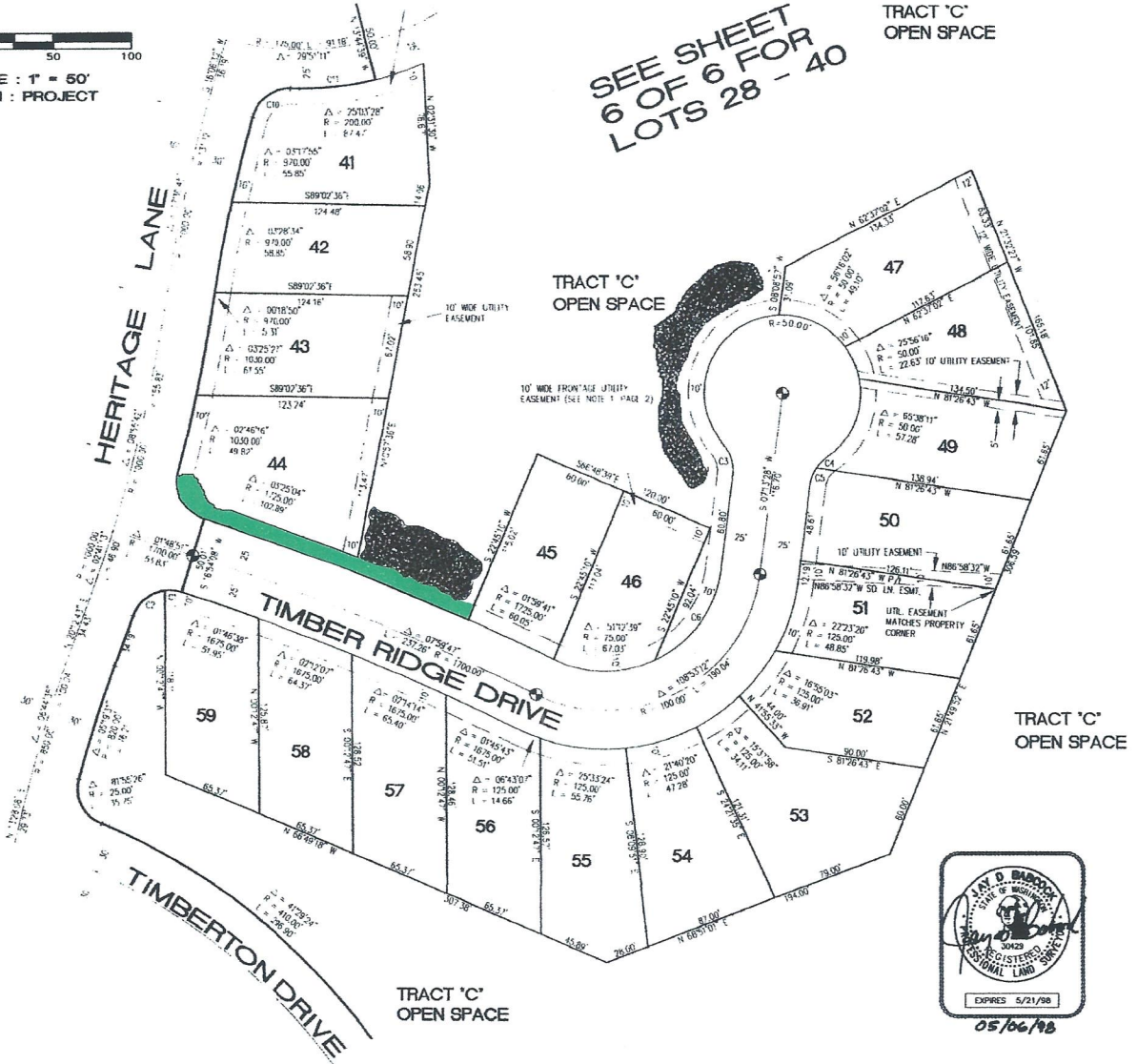
Trees and other vegetation

# TIMBERTON VILLAGE PHASE I I

A PORTION OF THE SW 1/4 AND OF THE SE 1/4  
OF SECTION 17, TWP. 28 N., RGE. 1 E., W.M.  
JEFFERSON COUNTY, WASHINGTON



SEE SHEET  
6 OF 6 FOR  
LOTS 28 - 40



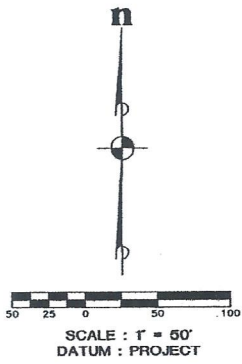
Maintained  
As Needed



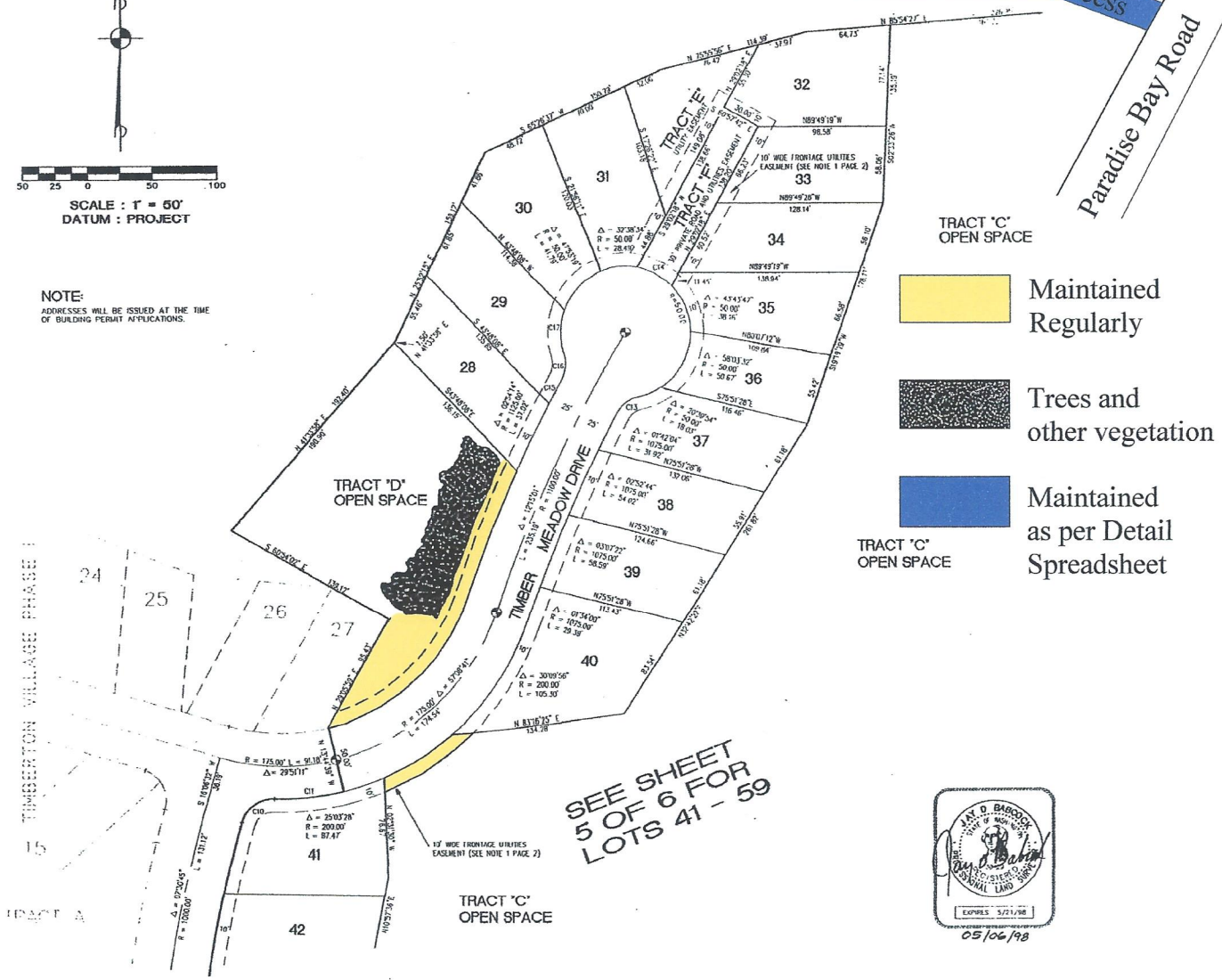
Trees and  
other vegetation

# TIMBERTON VILLAGE PHASE I I

A PORTION OF THE SW 1/4 AND OF THE SE 1/4  
OF SECTION 17, TWP. 28 N., RGE. 1 E., W.M.  
JEFFERSON COUNTY, WASHINGTON



NOTE:  
ADDRESSES WILL BE ISSUED AT THE TIME  
OF BUILDING PERMIT APPLICATIONS.



Woods  
Pond

Access  
Paradise Bay Road

TRACT 'C'  
OPEN SPACE

Maintained  
Regularly

Trees and  
other vegetation

Maintained  
as per Detail  
Spreadsheet

SEE SHEET  
5 OF 6 FOR  
LOTS 41 - 59

